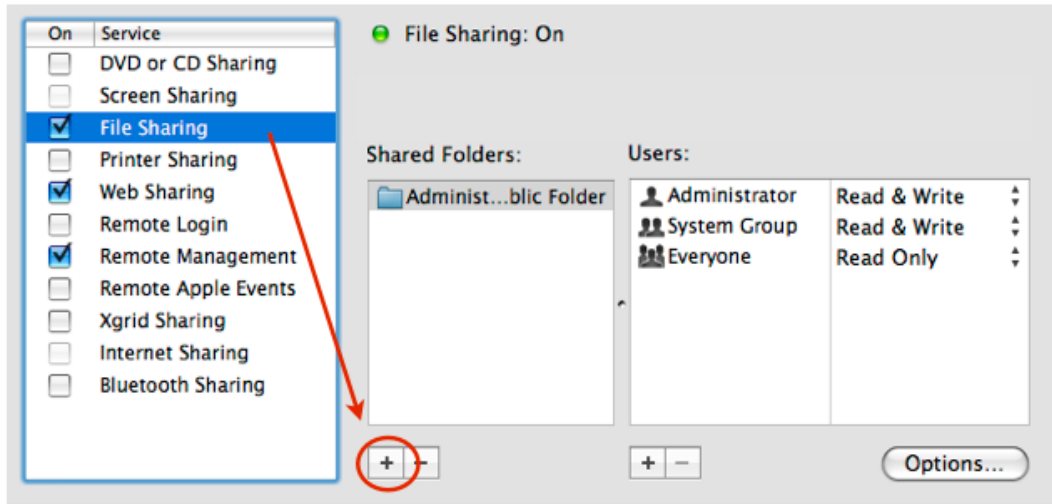


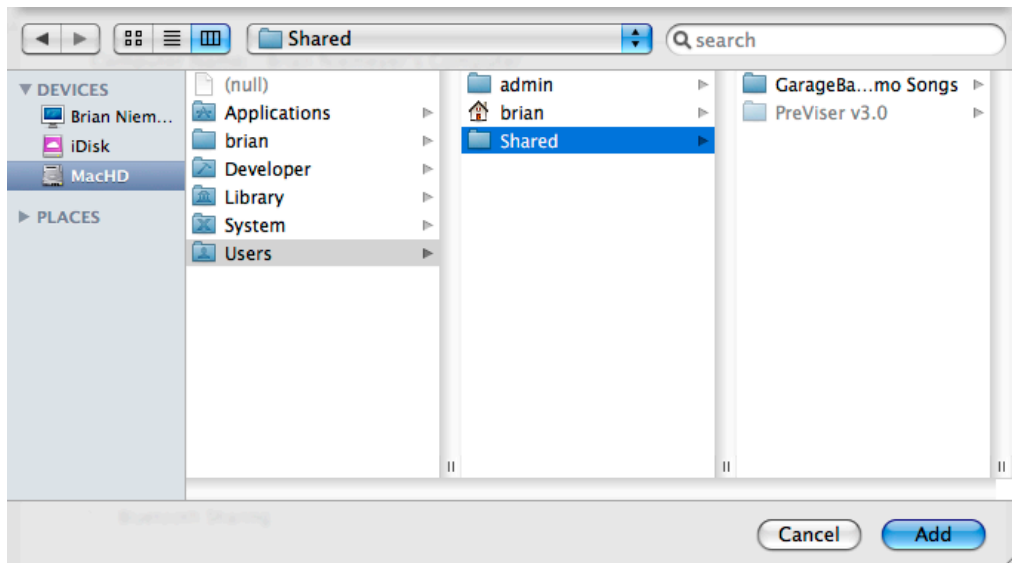
Setting Up PreViser Database Over Your Network

After you have installed the PreViser software on your Server & Client computers you are now ready to set-up your Client computer to view your PreViser Database on your Server.

On your Server computer you will need to share the PreViser located in your Server HD. Go to System Preferences >> Sharing >> select File Sharing.



Click the plus key under the Shared Folders: column >> select your Server HD >> Users >> Shared >> select the PreViser folder >> Add.

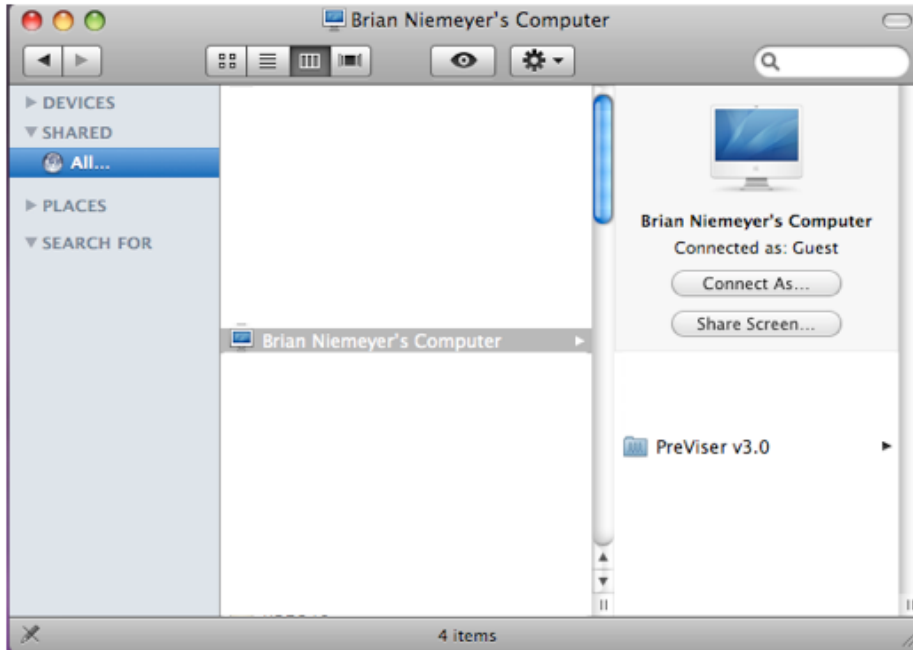


This will add your PreViser folder to your File Sharing >> Shared Folders column.

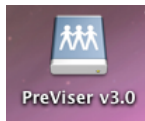
Setting Up PreViser Database Over Your Network

With the Server computer set-up we can now set-up your Client computers so you can save your data to the servers database.

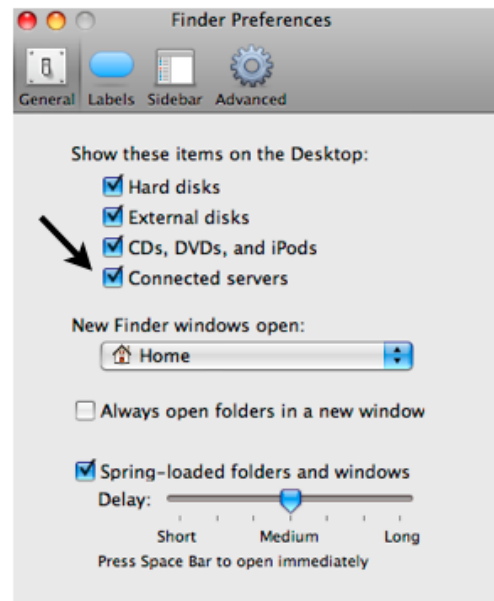
Go to your Client HD >> in the sidebar select your Shared node >> locate your Server HD >> select the PreViser folder.



When you select your PreViser folder your volume will launch. You should see an Icon appear on your desktop as shown below.

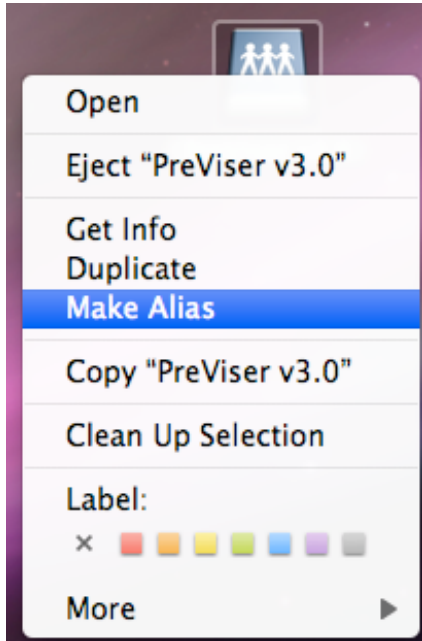


If this Icon does not appear you will need to enable you Finder Preferences >> Connected Servers.



Setting Up PreViser Database Over Your Network

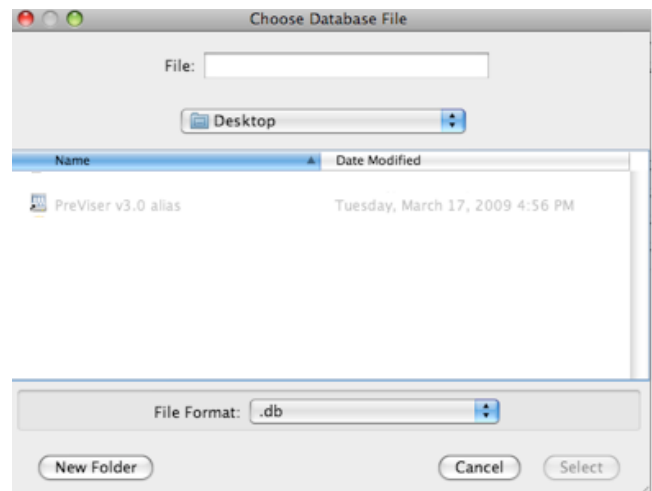
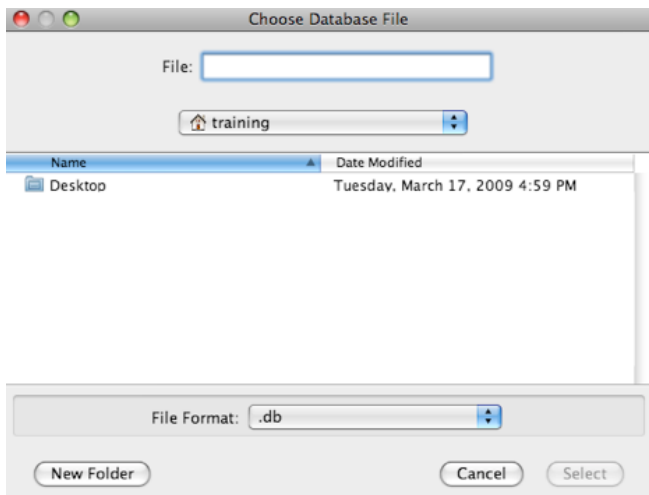
With your Icon on your Desktop we would suggest creating an alias of this icon for easy launching of your newly created volume.



When your log out of your computers or restart you can simply double click your PreViser Alias to launch your PreViser volume.

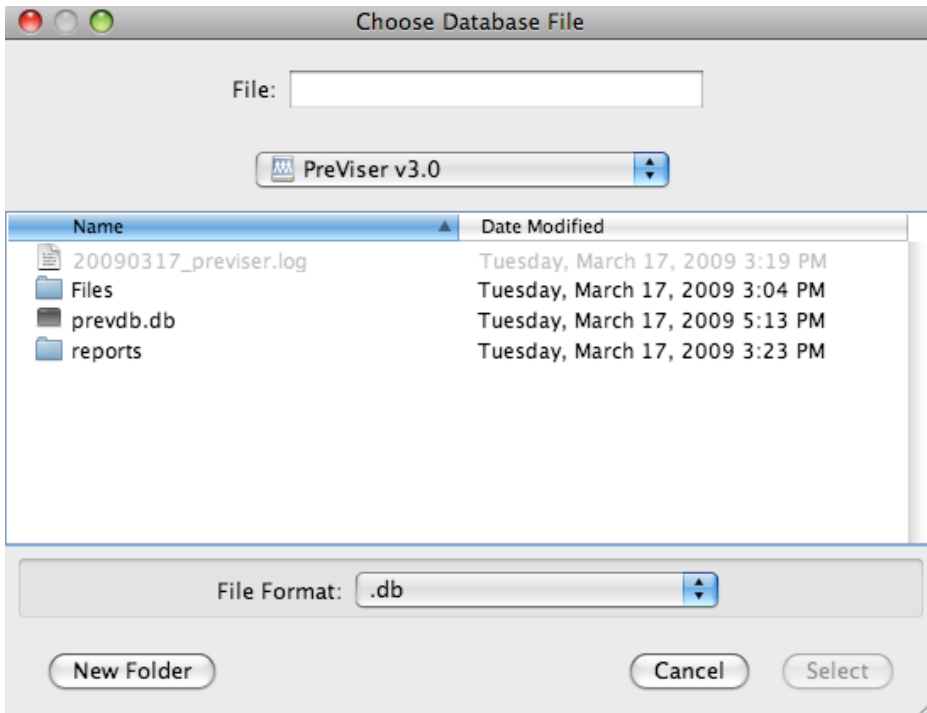
With your PreViser volume launch you can now set-up your PreViser application on your Client computer to pull data from and save data to your Server database.

Open PreViser >> go to Tool >> Option >> PreViser Database Location: select Edit.
Select Desktop >> you will see ProViser grayed out >> double click this alias



Setting Up PreViser Database Over Your Network

Once you double click the alias you will be taken to your contents of the volume.



Select “prevdb.db”

Then click the Select button in the bottom right.

This will add your new volume to your PreViser application PreViser Database Location.

PreViser Database Location

/Volumes/PreViser v3.0/prevdb.db

[Edit...](#)

[Proxy Server Settings](#)

NOTE: You must start your volume BEFORE you start PreViser or your PreViser Database Location will default to the user database on the client computer. If this happen you will need to re-path to the volume on your Server computer.